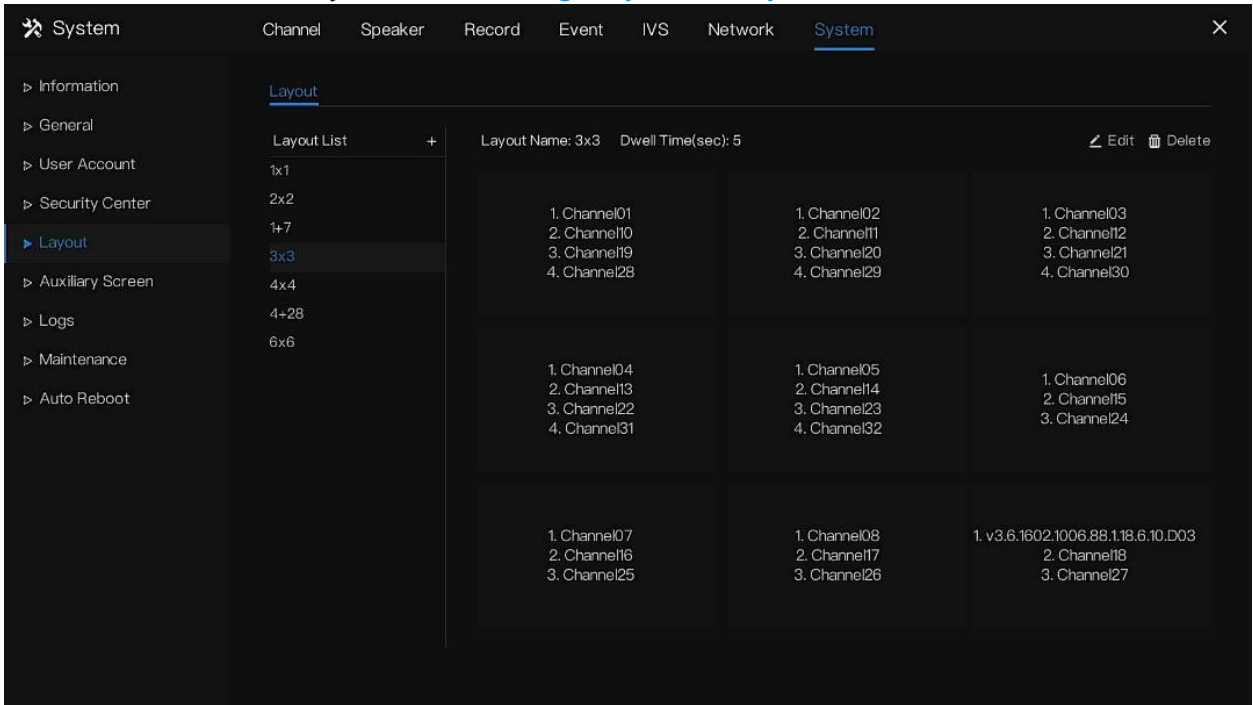
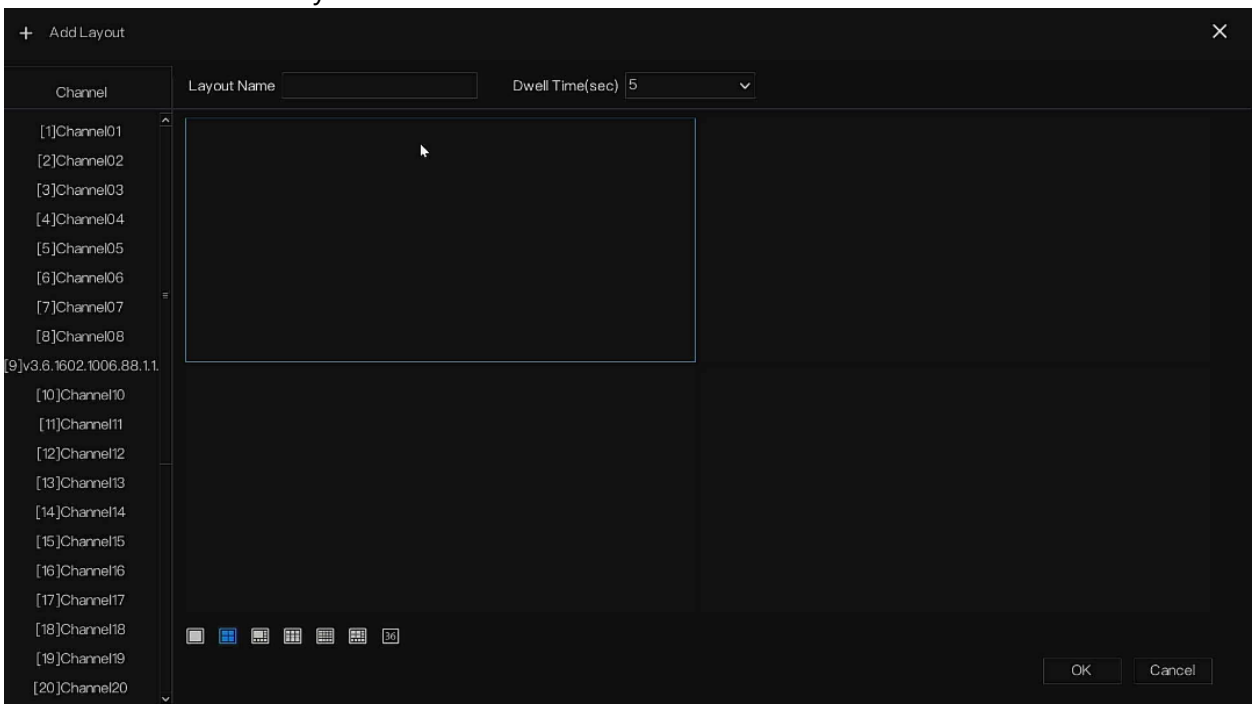


# How to create a customized layout on NVR/DVR

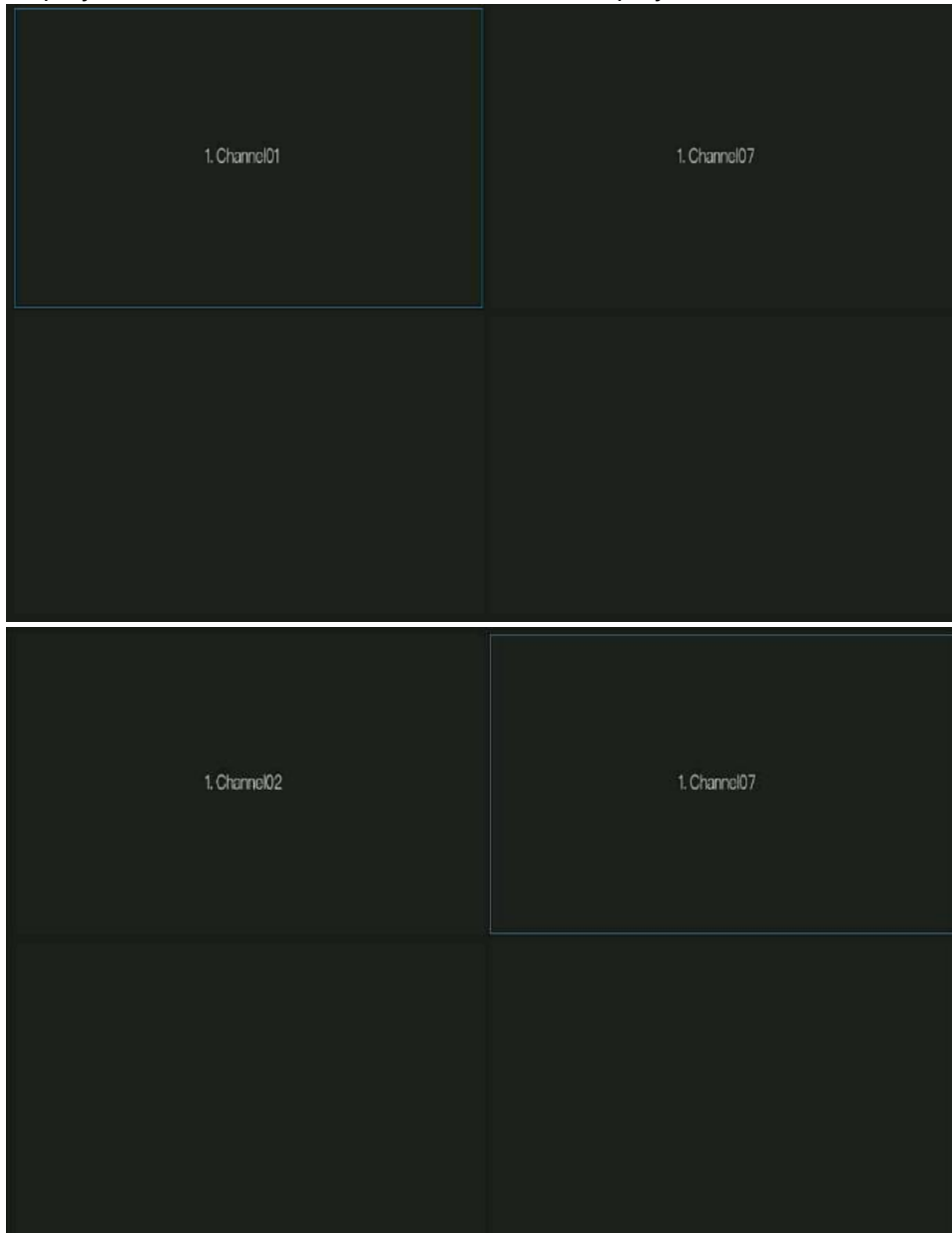
1. To create a customized layout. Go to [Setting](#) > [System](#) > [Layout](#).



2. Click '+' to add a new layout.



- 
3. Input the *Layout Name*, and select *SEQ dwell time* from the Dwell Time drop-down list (the display screen will loop play the real-time video according to setting time).
  4. Select split-screen mode at the bottom of the page. Set the channel display by dragging the channel to a specific position, or select the position first, then click the channel. A split screen can play multiple channels. Auto sequence means it will play according to the setting. For example, the first split screen is set as two pages (channels 1 and 2), and the second split screen is set as one page (channel 3). When the auto sequence is enabled, channel 1 and channel 3 are displayed, then channel 2 and channel 3 are displayed.



5. Click  to save dwell settings.  
*Note: Users can add up to 16 layouts.*

- 
6. To use the layout that you have created, go to the Live View screen and move your mouse cursor to the far bottom. The NVR floating menu bar will be displayed. Click Split-screen and select the layout that you added.

